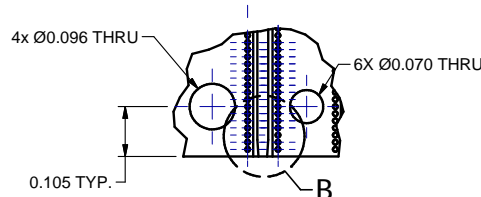
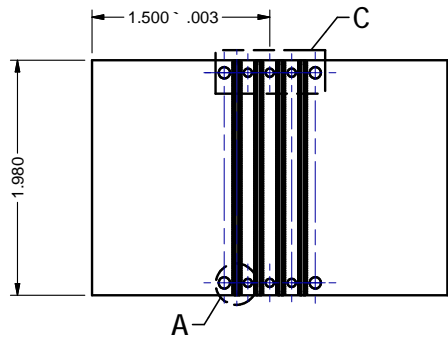
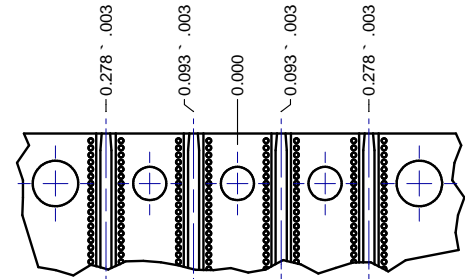


TELEDYNE PART NUMBER
710-0702-001

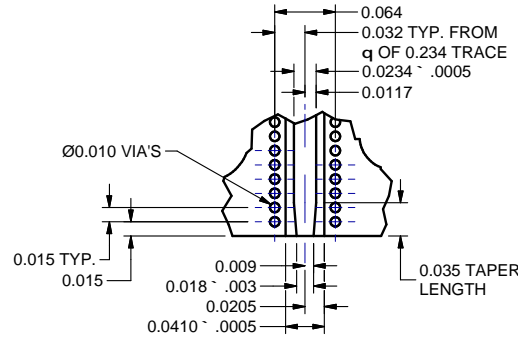
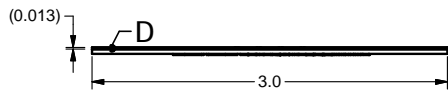
REVISION HISTORY					
REV	DATE	ORIGINATOR	APPROVED	DCRN	CAD
A	11/5/2019	Project 4792	J Armbruster	1911012	TMM



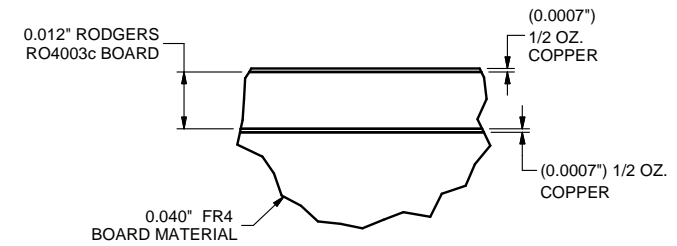
DETAIL A
SCALE 4 : 1



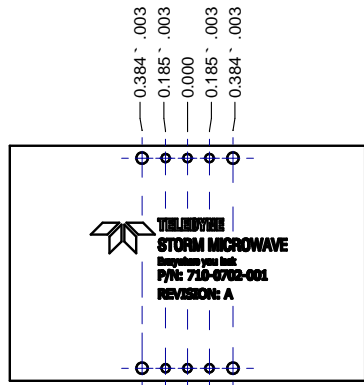
DETAIL C
SCALE 4 : 1



DETAIL B
SCALE 8 : 1
TYP. 4 PLACES



DETAIL D
SCALE 40:1

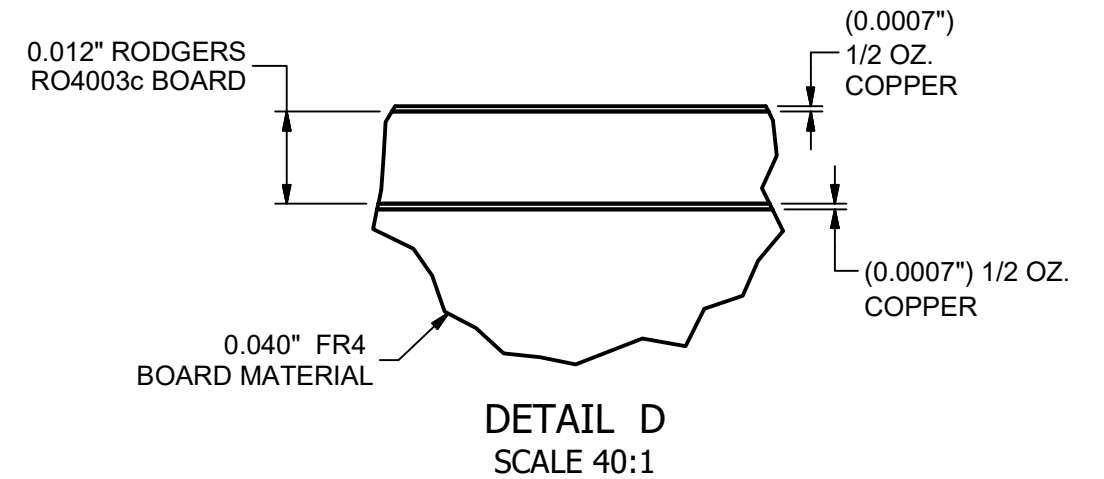
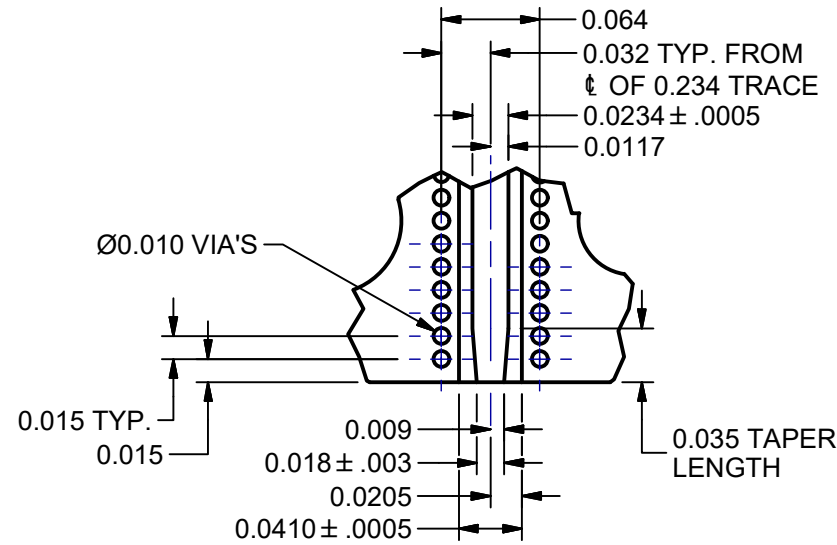
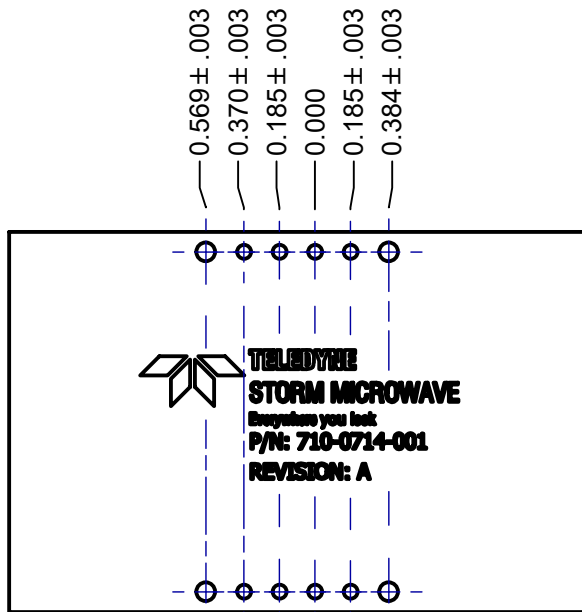
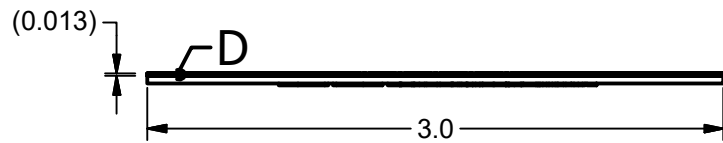
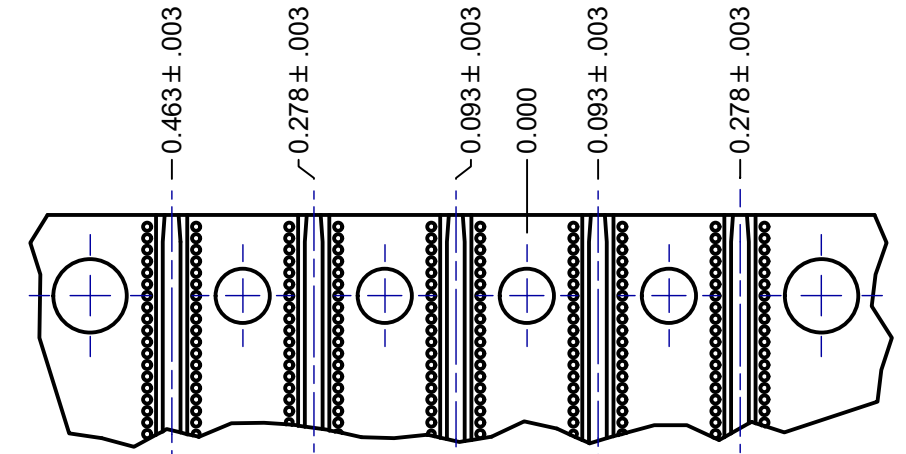
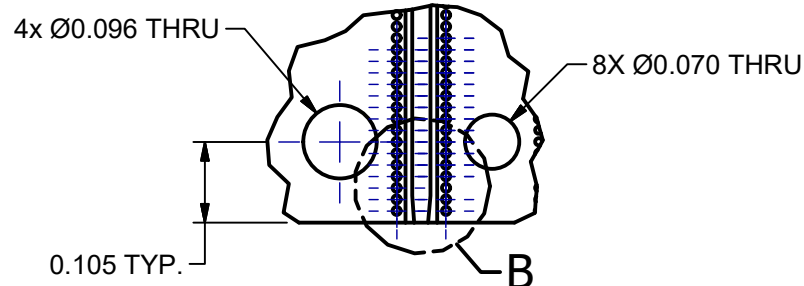
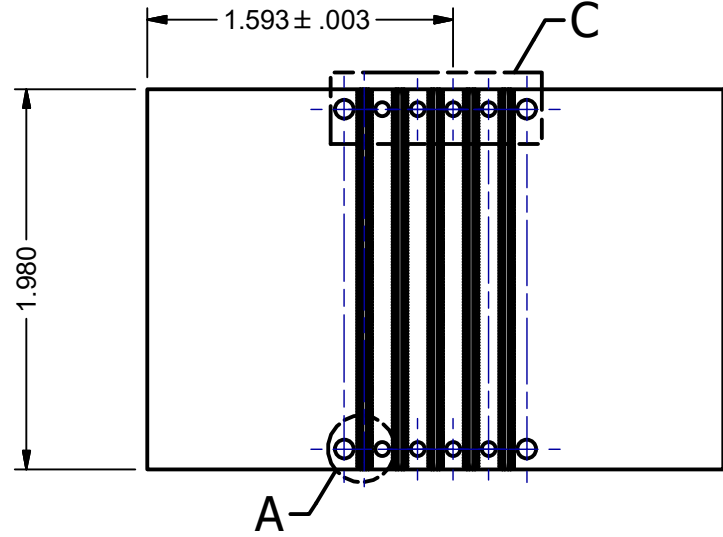


DIMENSIONS ARE RECOMMENDED FOR USE ON RODGERS RO4003C BOARD MATERIAL, 0.012" THICK, DOUBLE SIDED WITH 1/2 OZ. COPPER. THIS BOARD WILL BE BONDED TO A 0.040" FR4 PLATE.

UNLESS OTHERWISE SPECIFIED: DIM .XX ± DIM .XXX ± DIM .XXXX ± ANGLES ±°	ENGINEER: T.MCNAMEARA	PROJECT No:	 TELEDYNE STORM MICROWAVE Everywhere you look. www.teledynestorm.com	10221 WERCH DRIVE Woodridge, IL 60517 www.teledynestorm.com
	QUALITY:	MATERIAL:		
ALL DIMENSIONS ARE IN INCHES. REMOVE ALL BURRS, BREAK CORNERS & SHARP EDGES .003" MAX.	FINISH:	TITLE: TEST PC BOARD, 2X 4 POSITION SMPM EDGE LAUNCH CONNECTOR		
PART OR ASSY WEIGHT: N/A	DRAWING SIZE: B SCALE:		SHEET 1 of 1	
	DRAWING NUMBER: 710-0702		REVISION LEVEL: A	

TELEDYNE PART
NUMBER
710-0714-001

REVISION HISTORY					
REV	DATE	ORIGINATOR	APPROVED	DCRN	CAD
A	7/2/2020	T McNamara / P4792	R Nichols	2007017	TMM

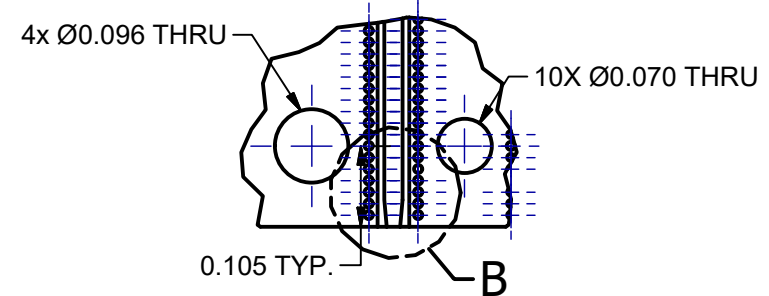
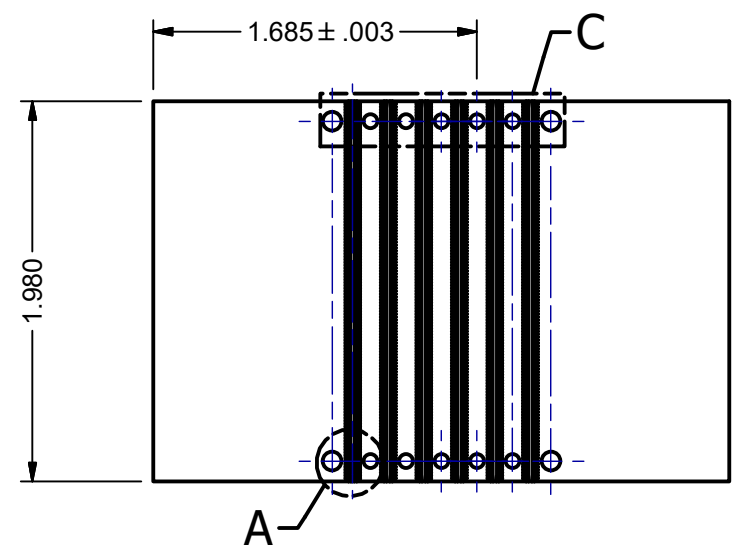


DIMENSIONS ARE RECOMMENDED FOR USE ON RODGERS RO4003C BOARD MATERIAL, 0.012" THICK, DOUBLE SIDED WITH 1/2 OZ. COPPER. THIS BOARD WILL BE BONDED TO A 0.040" FR4 PLATE.

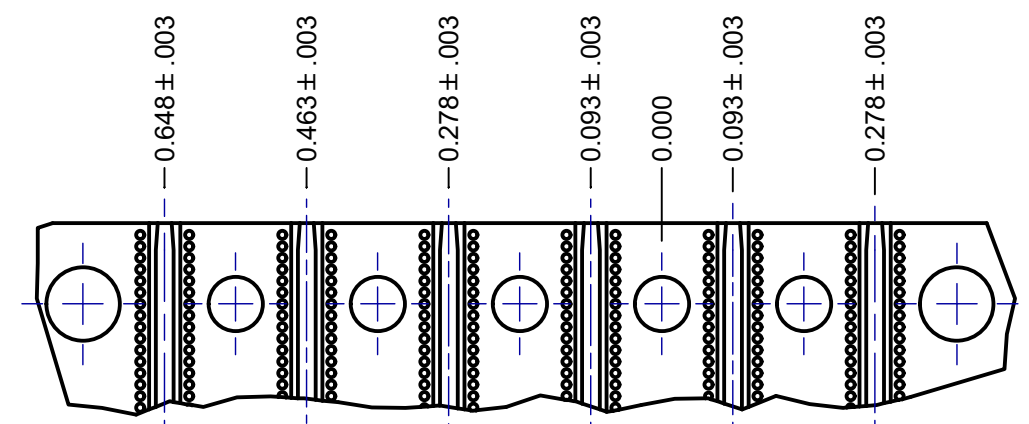
UNLESS OTHERWISE SPECIFIED: DIM .XX ± DIM .XXX ± DIM .XXXX ± ANGLES ±°	ENGINEER: T.McNAMARA	PROJECT No:	 TELEDYNE STORM MICROWAVE Everywhere you look	10221 WERCH DRIVE Woodridge, IL 60517 www.teledynestorm.com
	QUALITY:			
ALL DIMENSIONS ARE IN INCHES. REMOVE ALL BURRS, BREAK CORNERS & SHARP EDGES .003" MAX.	MATERIAL:		TITLE: TEST PC BOARD, 2X 5 POSITION SMPM EDGE LAUNCH CONNECTOR	
PART OR ASS'Y WEIGHT: N/A	FINISH:		DRAWING SIZE: B SCALE:	SHEET 1 of 1
			DRAWING NUMBER: 710-0714	REVISION LEVEL: A

TELEDYNE PART NUMBER
710-0716-001

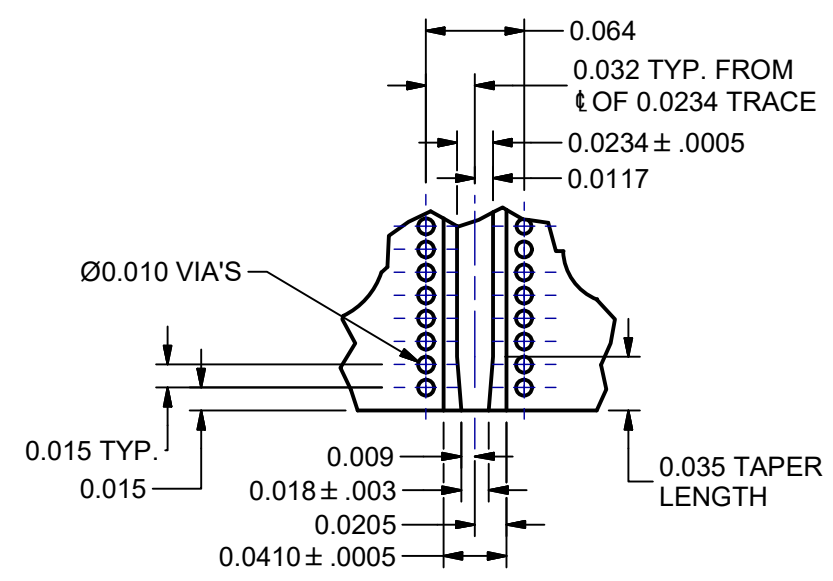
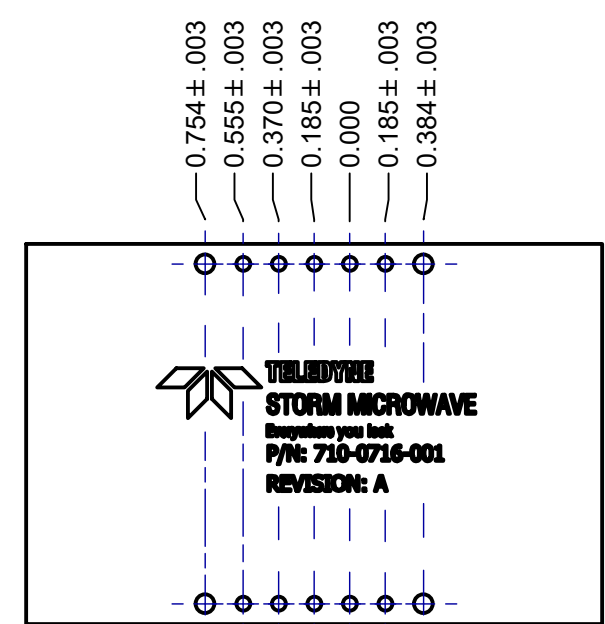
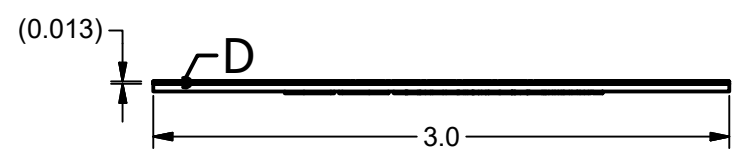
REVISION HISTORY					
REV	DATE	ORIGINATOR	APPROVED	DCRN	CAD
A	7/2/2020	T McNamara / P4792	R Nichols	2007019	TMM



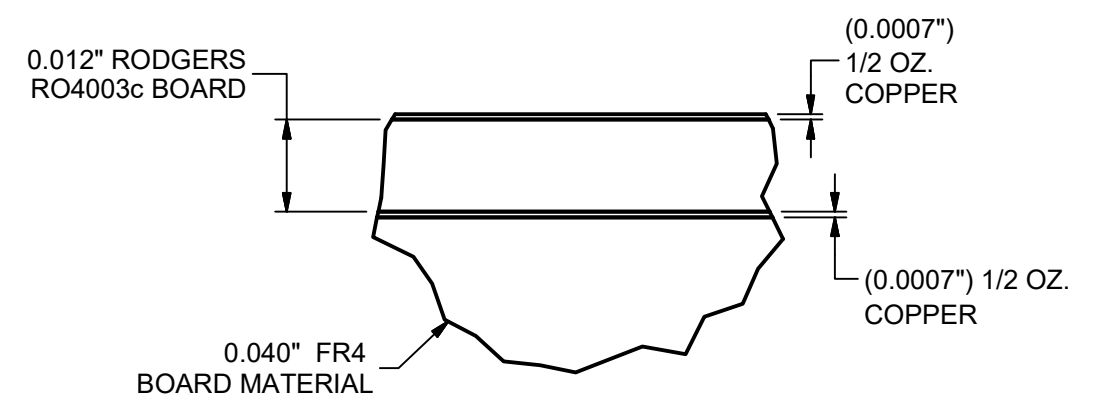
DETAIL A
SCALE 4 : 1



DETAIL C
SCALE 4 : 1



DETAIL B
SCALE 8 : 1
TYP. 6 PLACES



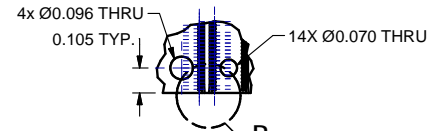
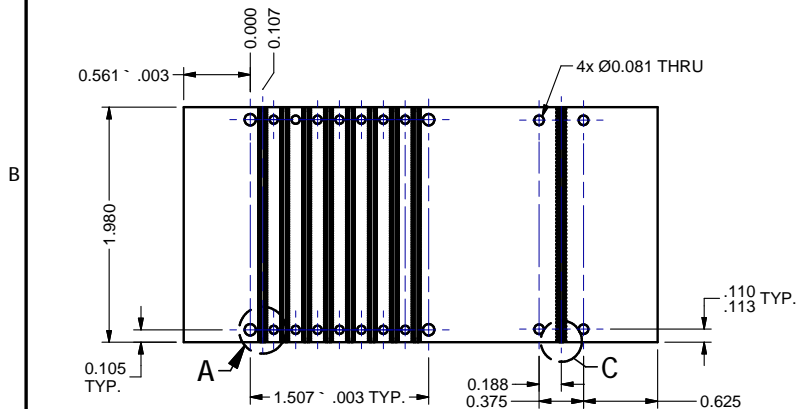
DETAIL D
SCALE 40:1

DIMENSIONS ARE RECOMMENDED FOR USE ON RODGERS RO4003C BOARD MATERIAL, 0.012" THICK, DOUBLE SIDED WITH 1/2 OZ. COPPER. THIS BOARD WILL BE BONDED TO A 0.040" FR4 PLATE.

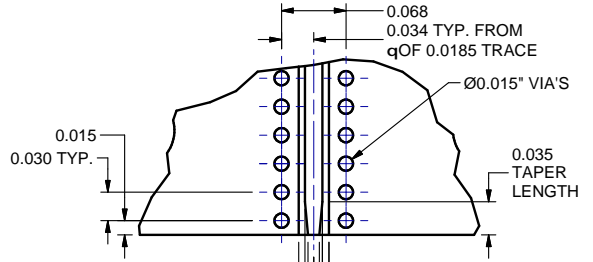
UNLESS OTHERWISE SPECIFIED: DIM .XX ± DIM .XXX ± DIM .XXXX ± ANGLES ±° ALL DIMENSIONS ARE IN INCHES. REMOVE ALL BURRS, BREAK CORNERS & SHARP EDGES .003" MAX. PART OR ASS'Y WEIGHT: N/A	ENGINEER: T.McNAMARA	PROJECT No:	 10221 WERCH DRIVE Woodridge, IL 60517 www.teledynestorm.com
	QUALITY:		
	MATERIAL:	TITLE: TEST PC BOARD, 2X 6 POSITION SMPM EDGE LAUNCH CONNECTOR	
	FINISH:	DRAWING SIZE: B	SCALE:
	DRAWING NUMBER: 710-0716	REVISION LEVEL: A	

TELEDYNE PART NUMBER
710-0605-001

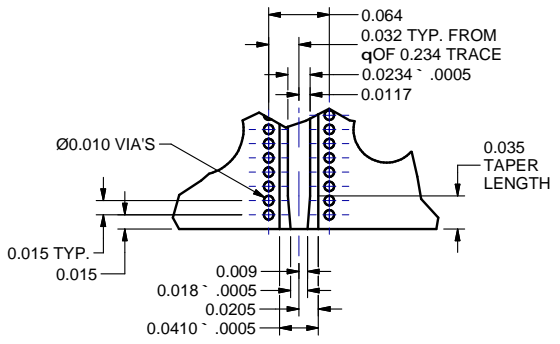
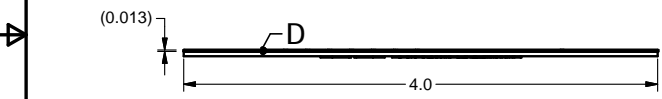
REVISION HISTORY					
REV	DATE	ORIGINATOR	APPROVED	DCRN	CAD
A	12/20/2016	Project 4792	J. Parrish	1612034	TMM
B	5/12/17	T. McNamara	R. Nichols	1705056	TMM
C	11/5/2019	T.McNamara	J Armbruster	1911011	TMM



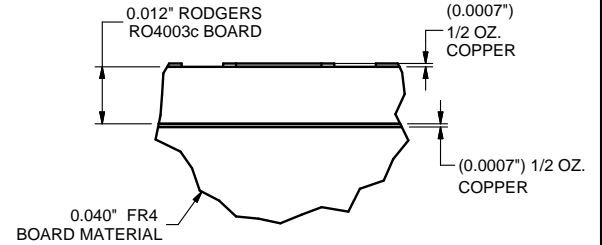
DETAIL A
SCALE 2 : 1



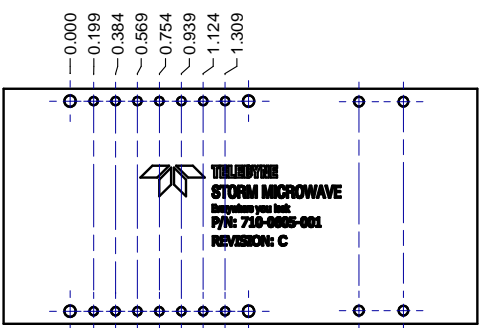
DETAIL C
SCALE 8:1



DETAIL B
SCALE 8 : 1
TYP. 8 PLACES



DETAIL D
SCALE 40:1

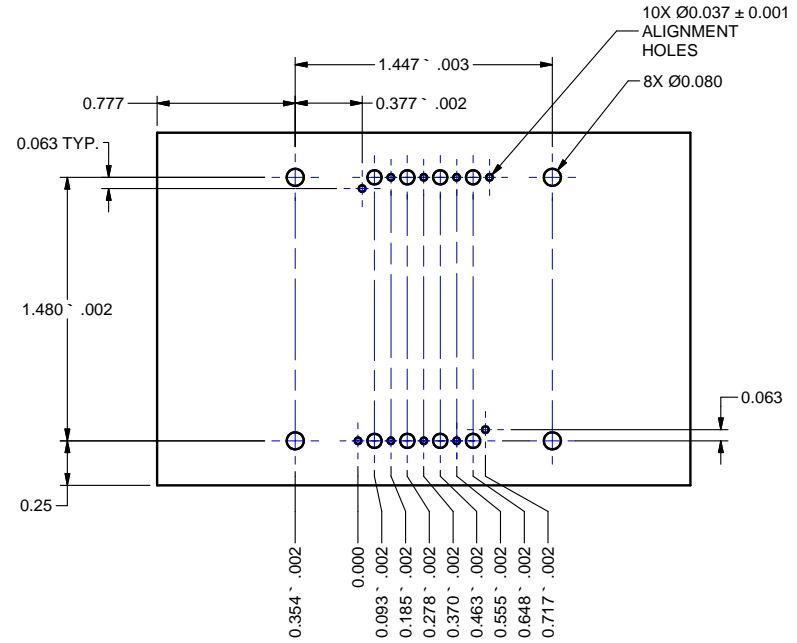
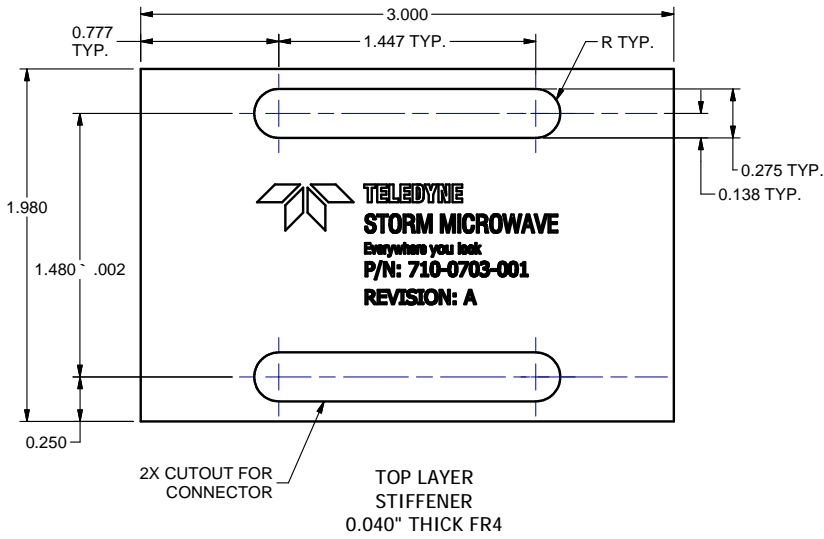
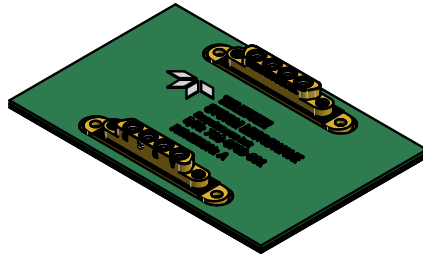


DIMENSIONS ARE RECOMMENDED FOR USE ON RODGERS RO4003C BOARD MATERIAL, 0.012" THICK, DOUBLE SIDED WITH 1/2 OZ. COPPER. THIS BOARD WILL BE BONDED TO A 0.040" FR4 PLATE.

UNLESS OTHERWISE SPECIFIED: DIM XX ± DIM XXX ± DIM XXXX ± ANGLES ±°	ENGINEER: T.McNAMARA	PROJECT No:	 TELEDYNE STORM MICROWAVE Everywhere you look www.teledynestorm.com	10221 WERCH DRIVE Woodridge, IL 60517 www.teledynestorm.com
	QUALITY:	TITLE: TEST PC BOARD, 2X 8 POSITION SMPM & SMA-SJ EDGE LAUNCH CONNECTOR		
ALL DIMENSIONS ARE IN INCHES. REMOVE ALL BURRS, BREAK CORNERS & SHARP EDGES .003" MAX.	MATERIAL:	DRAWING SIZE: B SCALE:		SHEET 1 of 1
PART OR ASSY WEIGHT: N/A	FINISH:	DRAWING NUMBER: 710-0605	REVISION LEVEL: C	

TELEDYNE
PART NUMBER
710-0703-001

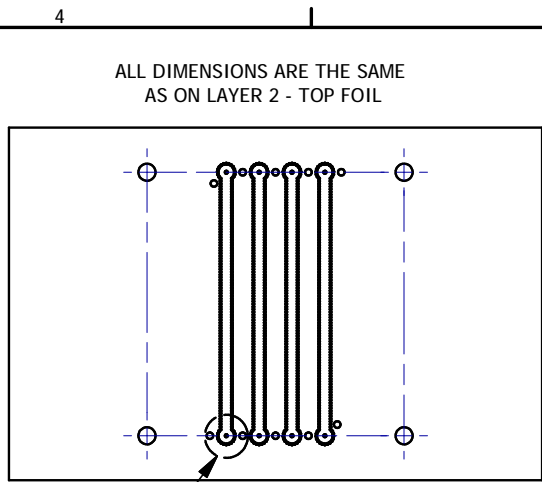
REVISION HISTORY					
REV	DATE	ORIGINATOR	APPROVED	DCRN	CAD
A	11/05/2019	Project 4792	J Armbruster	1911013	TMM



2nd LAYER
TOP FOIL
FINISHED COPPER
WEIGHT 1 oz.

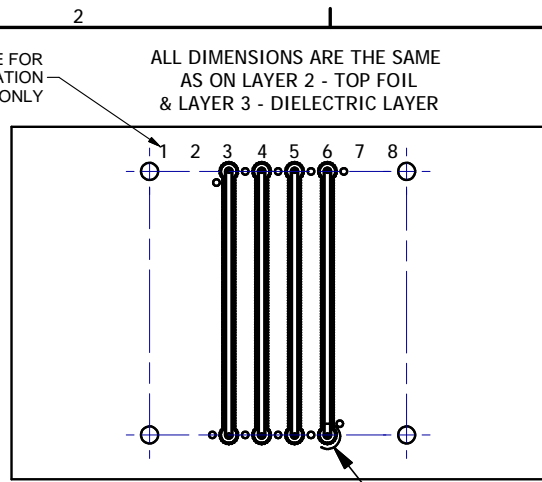
- NOTES TO MANUFACTURER**
- VIAS ARE THE ONLY PLATED THRU HOLES. ALL OTHER HOLES SHOULD NOT BE PLATED.
 - THE FR4 SUBSTRATE SHOULD BE BONDED WITH NO FLOW PRE-PREG.

UNLESS OTHERWISE SPECIFIED: DIM .XX ± .015" DIM .XXX ± .005" DIM .XXXX ± .0002" ANGLES ± 1°	ENGINEER: T.MCNAMEARA	PROJECT No: 4792	 TELEDYNE STORM MICROWAVE Everywhere you look www.teledynestorm.com	10221 WERCH DRIVE Woodridge, IL 60517
	QUALITY: Quality Signature	TITLE: 4 POSITION VERTICAL LAUNCH PC BOARD		
ALL DIMENSIONS ARE IN INCHES. REMOVE ALL BURRS, BREAK CORNERS & SHARP EDGES .003" MAX.	MATERIAL:	DRAWING SIZE: B SCALE: 1.5:1 SHEET 1 of 2		
PART OR ASSY WEIGHT: N/A	FINISH:	DRAWING NUMBER: 710-0703	REVISION LEVEL: A	



ALL DIMENSIONS ARE THE SAME
AS ON LAYER 2 - TOP FOIL

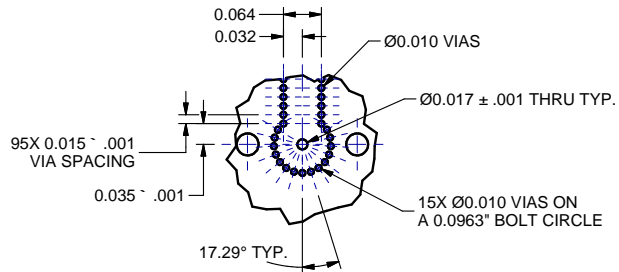
A
3rd LAYER
DIELECTRIC LAYER
0.032" THICK ROGERS 4003C



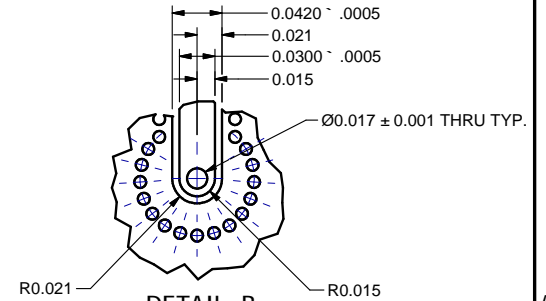
NUMBERS ARE FOR
IDENTIFICATION
PURPOSES ONLY

ALL DIMENSIONS ARE THE SAME
AS ON LAYER 2 - TOP FOIL
& LAYER 3 - DIELECTRIC LAYER


B
BOTTOM LAYER
BOTTOM FOIL
FINISHED COPPER
WEIGHT 1 oz.



DETAIL A
TYP. 4 PLACES
SCALE 5 : 1

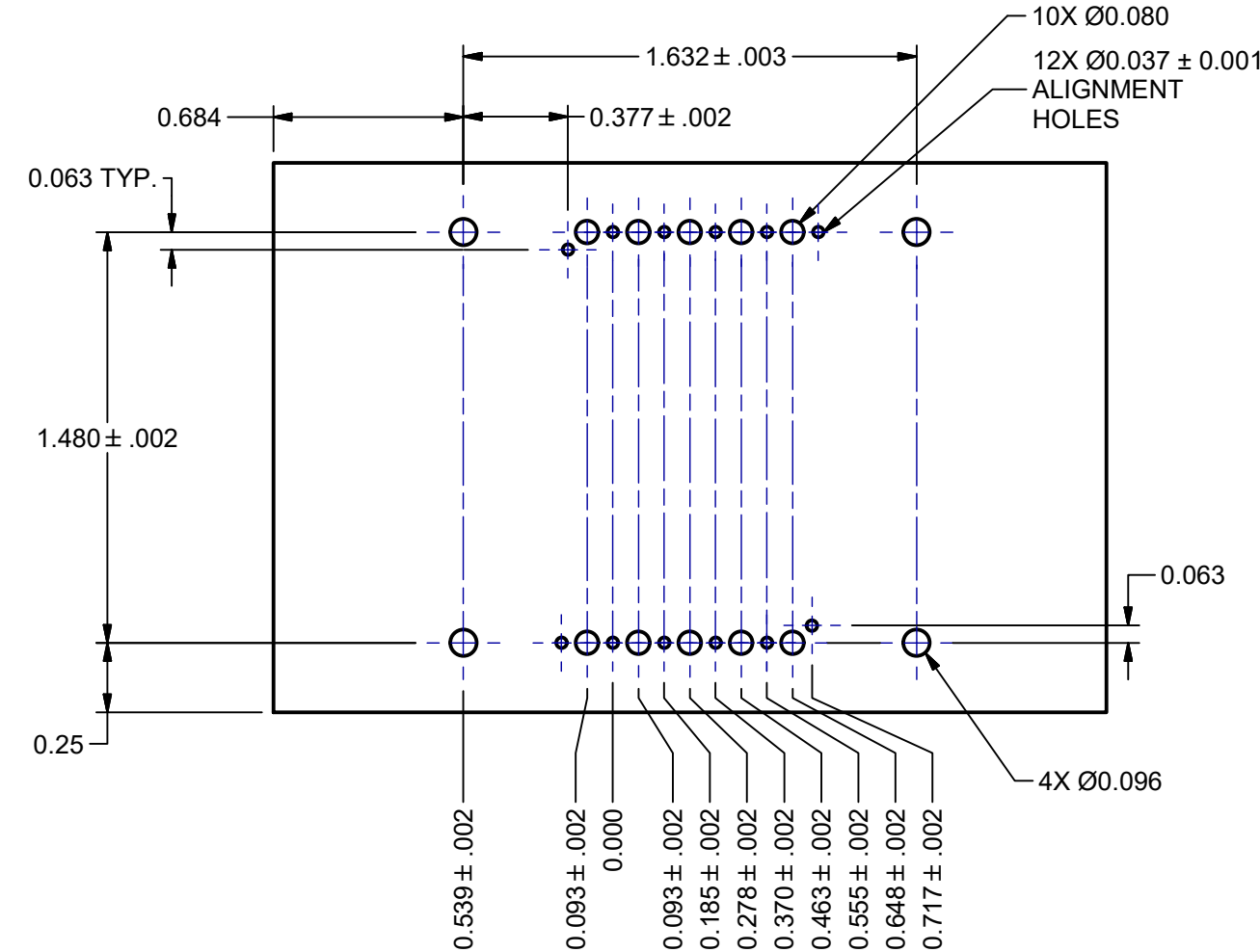
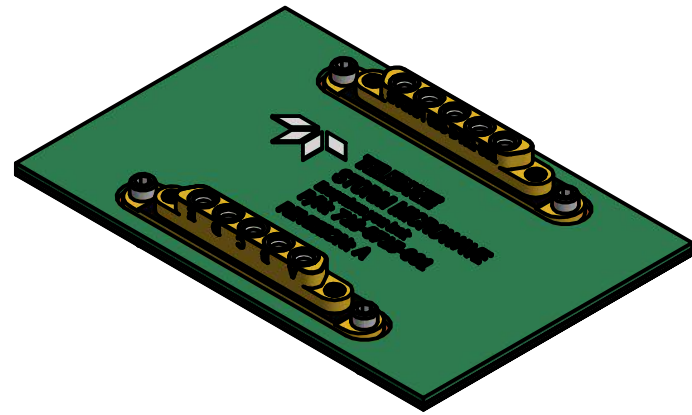


DETAIL B
TYP. 4 PLACES
SCALE 10 : 1

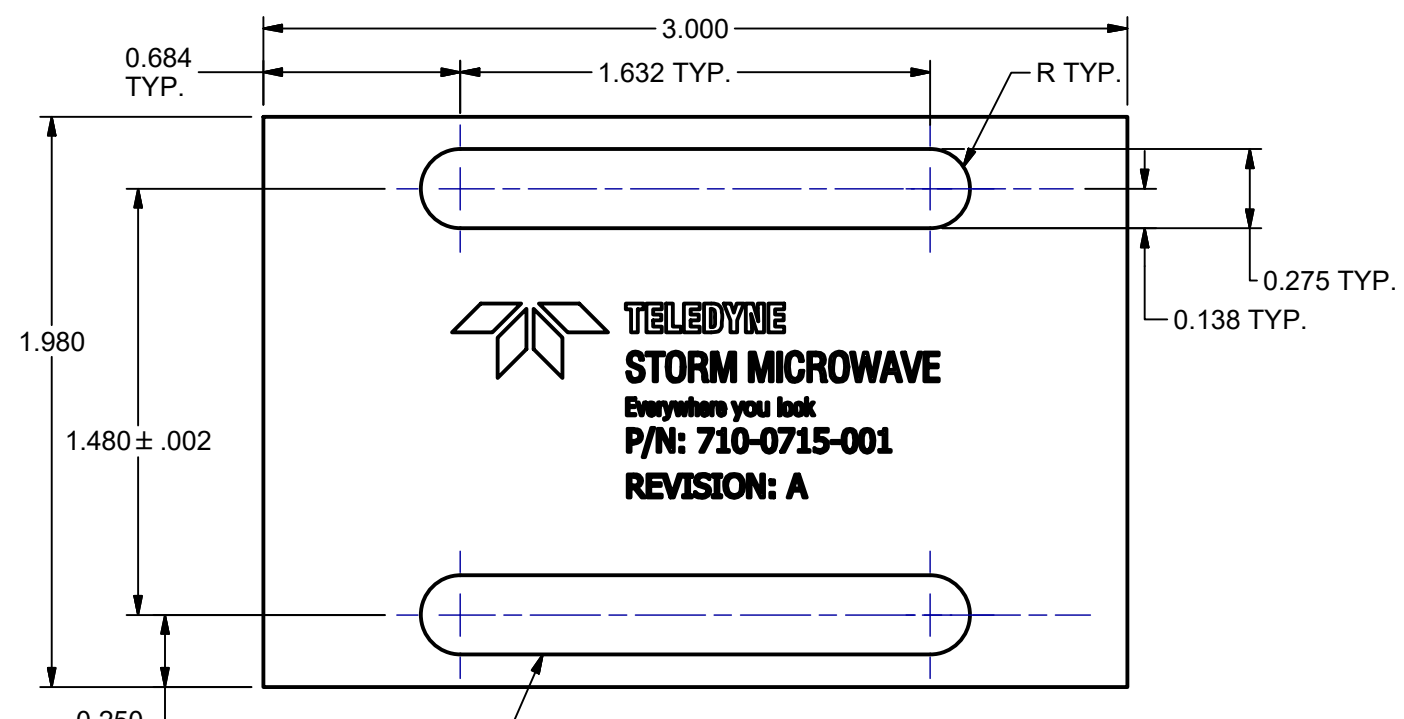
UNLESS OTHERWISE SPECIFIED: DIM .XX ± .015" DIM .XXX ± .005" DIM .XXXX ± .0002" ANGLES ± 1°	ENGINEER: T.MCNAMEARA	PROJECT No: 4792	 TELEDYNE STORM MICROWAVE Everywhere you look www.teledynestorm.com	10221 WERCH DRIVE Woodridge, IL 60517 www.teledynestorm.com
	QUALITY: Quality Signature	MATERIAL:		
ALL DIMENSIONS ARE IN INCHES. REMOVE ALL BURRS, BREAK CORNERS & SHARP EDGES .003" MAX.	FINISH:		TITLE: 4 POSITION VERTICAL LAUNCH PC BOARD	
PART OR ASSY WEIGHT: N/A	DRAWING SIZE: B SCALE: 1.5:1		DRAWING NUMBER: 710-0703	SHEET 2 of 2 REVISION LEVEL: A

TELEDYNE
PART NUMBER
710-0703-001

REVISION HISTORY					
REV	DATE	ORIGINATOR	APPROVED	DCRN	CAD
A	7/2/2020	T McNamara / P4792	R Nichols	2007018	TMM



2nd LAYER
TOP FOIL
FINISHED COPPER
WEIGHT 1 oz.



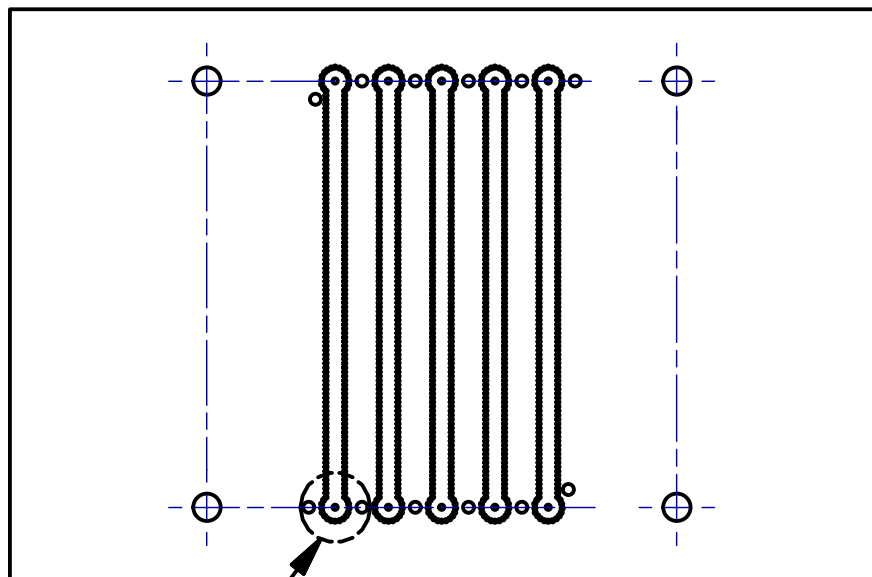
TELEDYNE
STORM MICROWAVE
Everywhere you look
P/N: 710-0715-001
REVISION: A

2X CUTOUT FOR CONNECTOR
TOP LAYER STIFFENER
0.040" THICK FR4

- NOTES TO MANUFACTURER**
- 1) VIAS ARE THE ONLY PLATED THRU HOLES. ALL OTHER HOLES SHOULD NOT BE PLATED.
 - 2) THE FR4 SUBSTRATE SHOULD BE BONDED WITH NO FLOW PRE-PREG.

UNLESS OTHERWISE SPECIFIED: DIM .XX ± .015" DIM .XXX ± .005" DIM .XXXX ± .0002" ANGLES ± 1° ALL DIMENSIONS ARE IN INCHES. REMOVE ALL BURRS, BREAK CORNERS & SHARP EDGES .003" MAX. PART OR ASSY WEIGHT: N/A	ENGINEER: T.McNAMARA	PROJECT No: 4792	TELEDYNE STORM MICROWAVE Everywhere you look 10221 WERCH DRIVE Woodridge, IL 60517 www.teledynestorm.com
	QUALITY: <i>Quality Signature</i>	TITLE: 5 POSITION VERTICAL LAUNCH PC BOARD	
	MATERIAL:	DRAWING SIZE: B SCALE: 1.5:1 SHEET 1 of 2	
	FINISH:	DRAWING NUMBER: 710-0715 REVISION LEVEL: A	

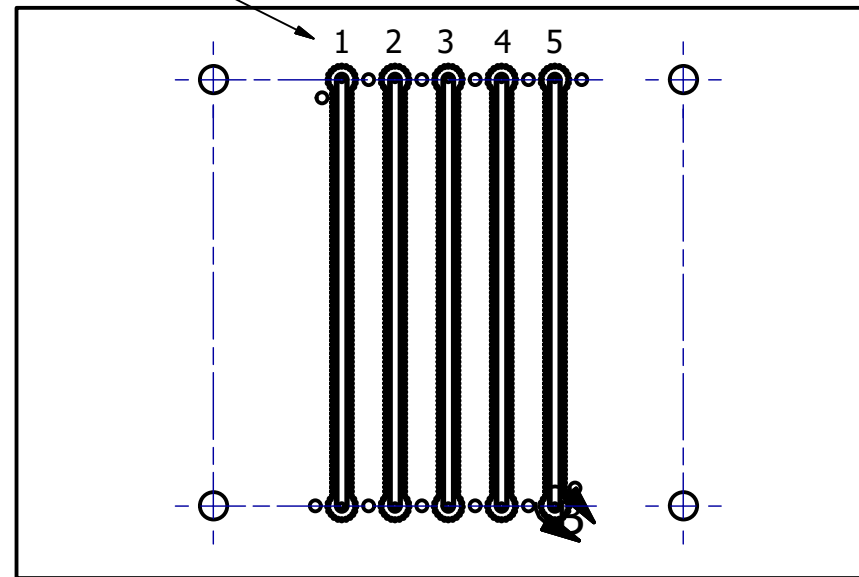
ALL DIMENSIONS ARE THE SAME
AS ON LAYER 2 - TOP FOIL



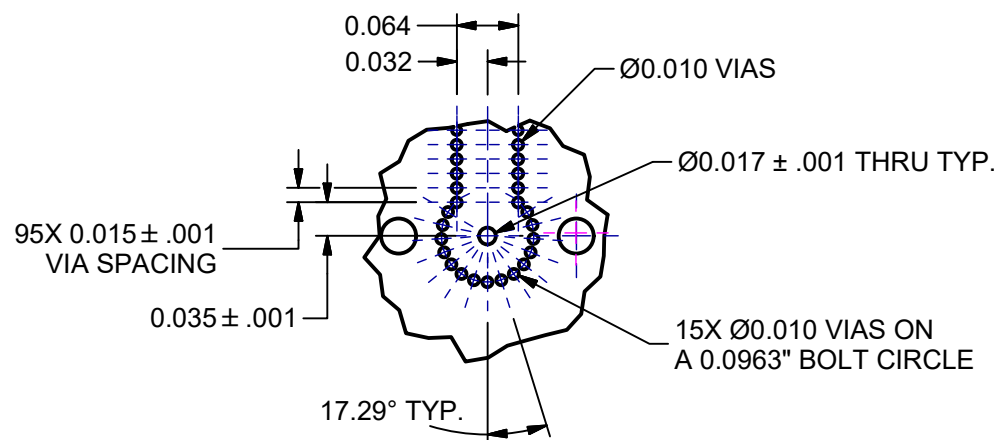
A
3rd LAYER
DIELECTRIC LAYER
0.032" THICK ROGERS 4003C

NUMBERS ARE FOR
IDENTIFICATION
PURPOSES ONLY

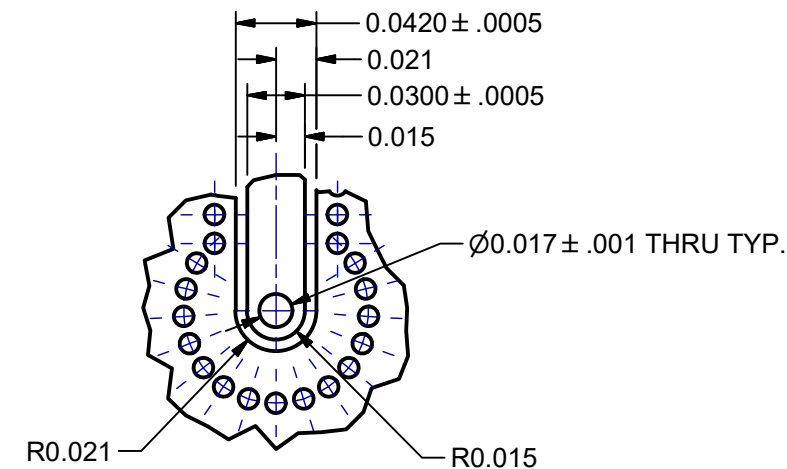
ALL DIMENSIONS ARE THE SAME
AS ON LAYER 2 - TOP FOIL
& LAYER 3 - DIELECTRIC LAYER




BOTTOM LAYER
BOTTOM FOIL
FINISHED COPPER
WEIGHT 1 oz.



DETAIL A
TYP. 5 PLACES
SCALE 5 : 1

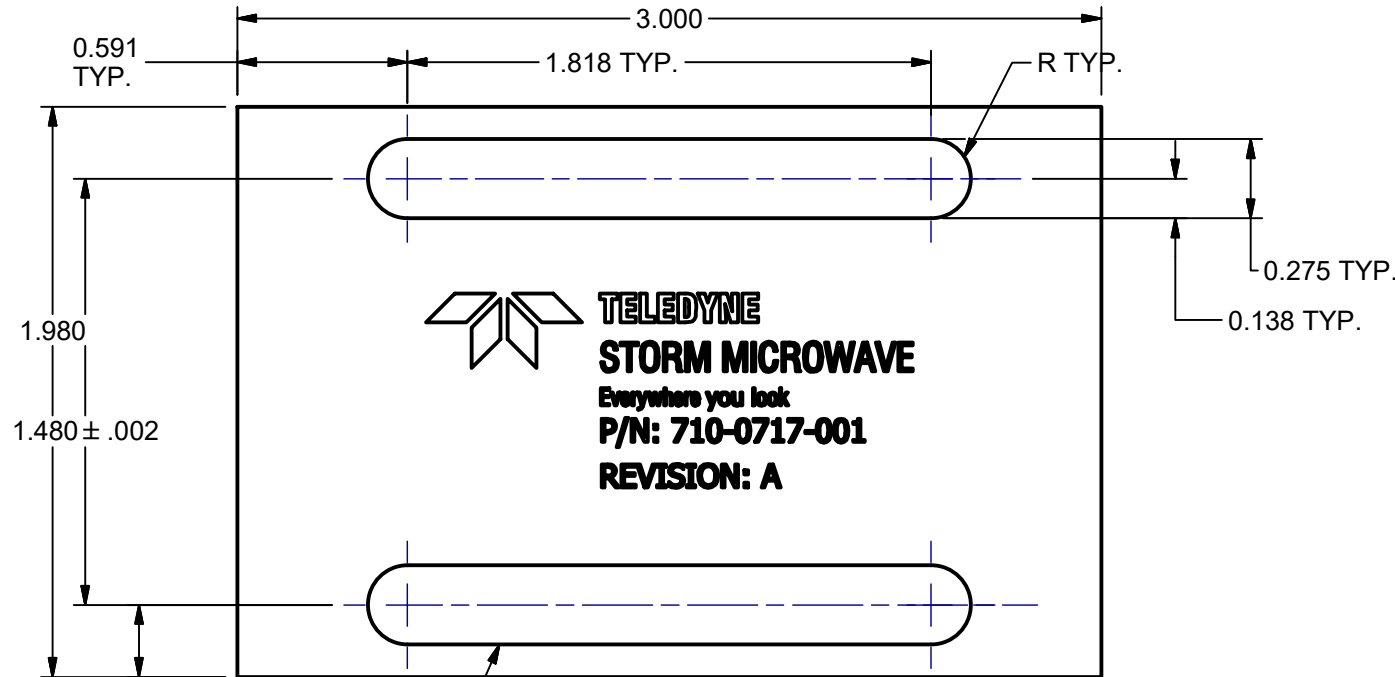
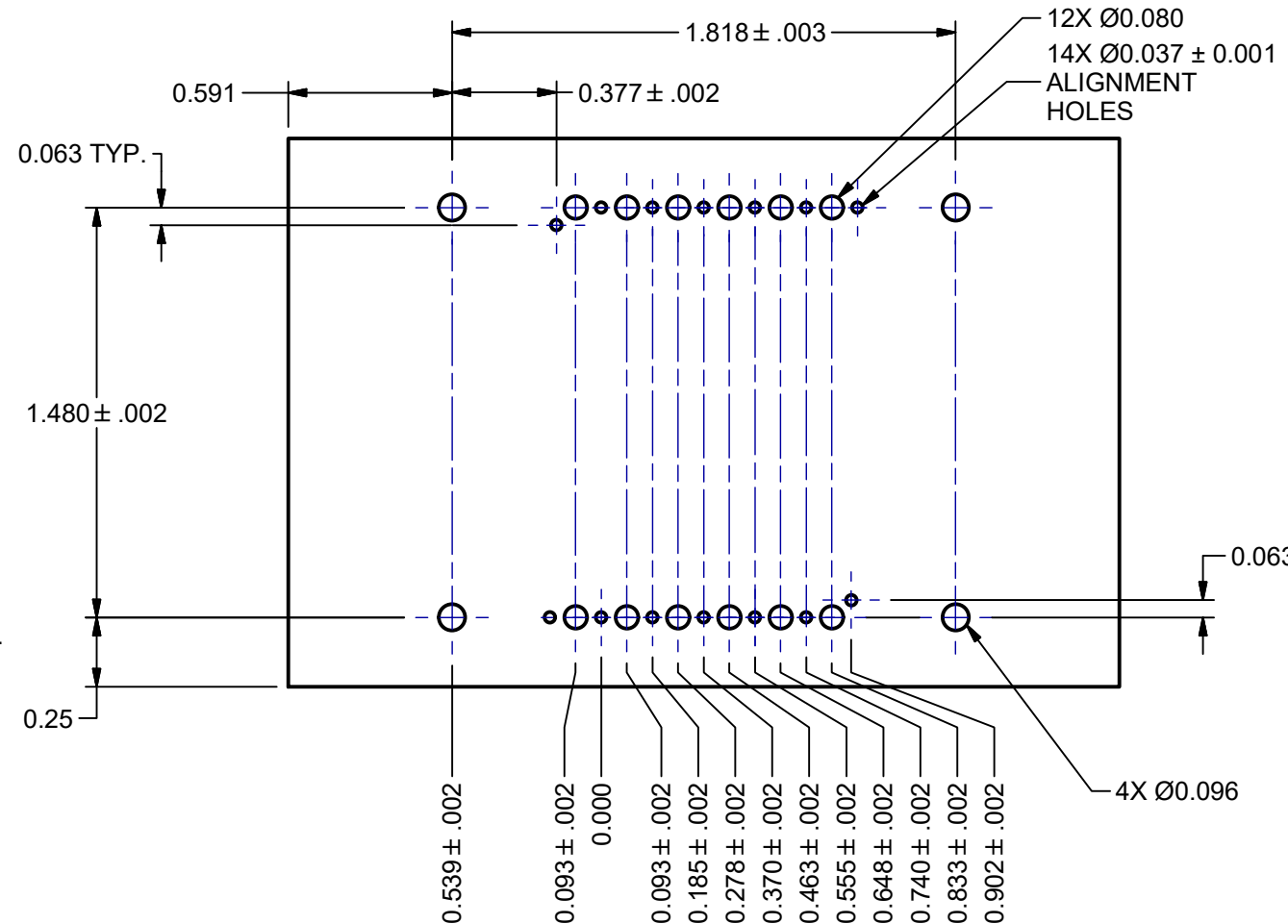
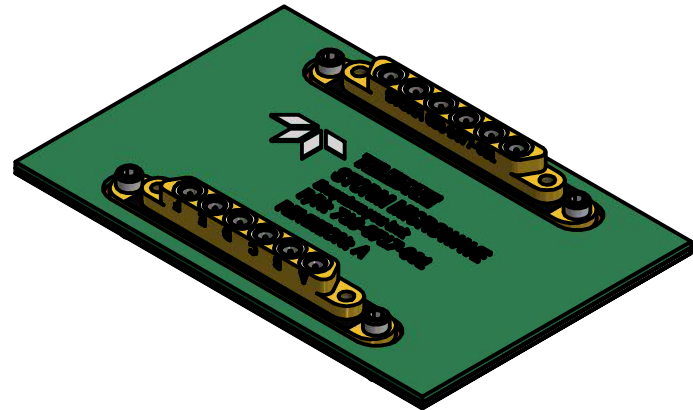


DETAIL B
TYP. 5 PLACES
SCALE 10 : 1

UNLESS OTHERWISE SPECIFIED: DIM .XX ± .015" DIM .XXX ± .005" DIM .XXXX ± .0002" ANGLES ± 1°	ENGINEER: T.MCNAMEARA	PROJECT No: 4792	 TELEDYNE STORM MICROWAVE <i>Everywhere you look</i>	10221 WERCH DRIVE Woodridge, IL 60517 www.teledynestorm.com
	QUALITY: <i>Quality Signature</i>	TITLE: 5 POSITION VERTICAL LAUNCH PC BOARD		
ALL DIMENSIONS ARE IN INCHES. REMOVE ALL BURRS, BREAK CORNERS & SHARP EDGES .003" MAX.	MATERIAL:	DRAWING SIZE: B		SCALE: 1.5:1
PART OR ASS'Y WEIGHT: N/A	FINISH:	DRAWING NUMBER: 710-0715	SHEET 2 of 2 REVISION LEVEL: A	

TELEDYNE
PART NUMBER
710-0717-001

REVISION HISTORY					
REV	DATE	ORIGINATOR	APPROVED	DCRN	CAD
A	7/2/2020	T McNamara / P4792	R Nichols	2007020	TMM



TELEDYNE
STORM MICROWAVE
Everywhere you look
P/N: 710-0717-001
REVISION: A

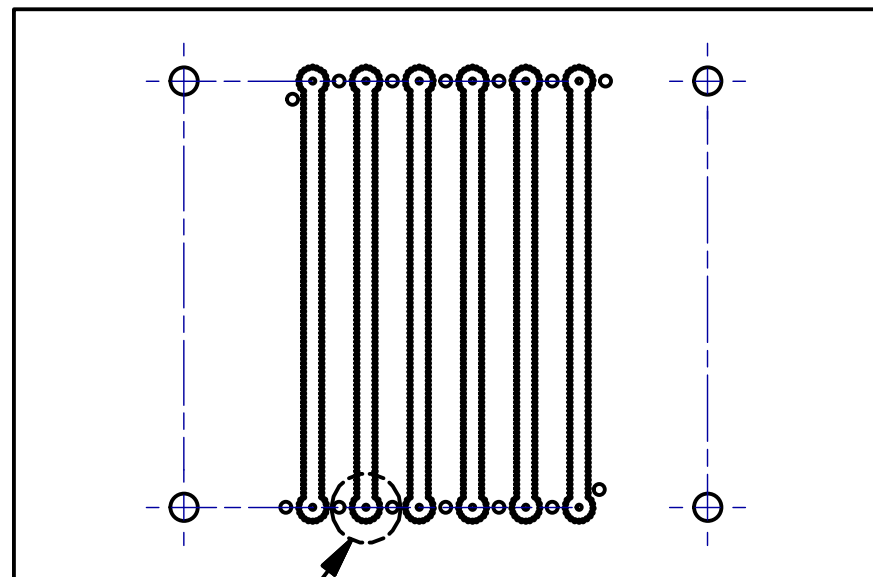
2X CUTOUT FOR CONNECTOR
TOP LAYER STIFFENER
0.040" THICK FR4

2nd LAYER
TOP FOIL
FINISHED COPPER
WEIGHT 1 oz.

- NOTES TO MANUFACTURER**
- 1) VIAS ARE THE ONLY PLATED THRU HOLES. ALL OTHER HOLES SHOULD NOT BE PLATED.
 - 2) THE FR4 SUBSTRATE SHOULD BE BONDED WITH NO FLOW PRE-PREG.

UNLESS OTHERWISE SPECIFIED: DIM .XX ± .015" DIM .XXX ± .005" DIM .XXXX ± .0002" ANGLES ± 1° ALL DIMENSIONS ARE IN INCHES. REMOVE ALL BURRS, BREAK CORNERS & SHARP EDGES .003" MAX. PART OR ASSY WEIGHT: N/A	ENGINEER: T.McNAMARA	PROJECT No: 4792	TELEDYNE STORM MICROWAVE Everywhere you look	10221 WERCH DRIVE Woodridge, IL 60517 www.teledynestorm.com	
	QUALITY: <i>Quality Signature</i>	TITLE: 6 POSITION VERTICAL LAUNCH PC BOARD			
	MATERIAL:	DRAWING SIZE: B	SCALE: 1.5:1	SHEET 1 of 2	
	FINISH:	DRAWING NUMBER: 710-0717	REVISION LEVEL: A		

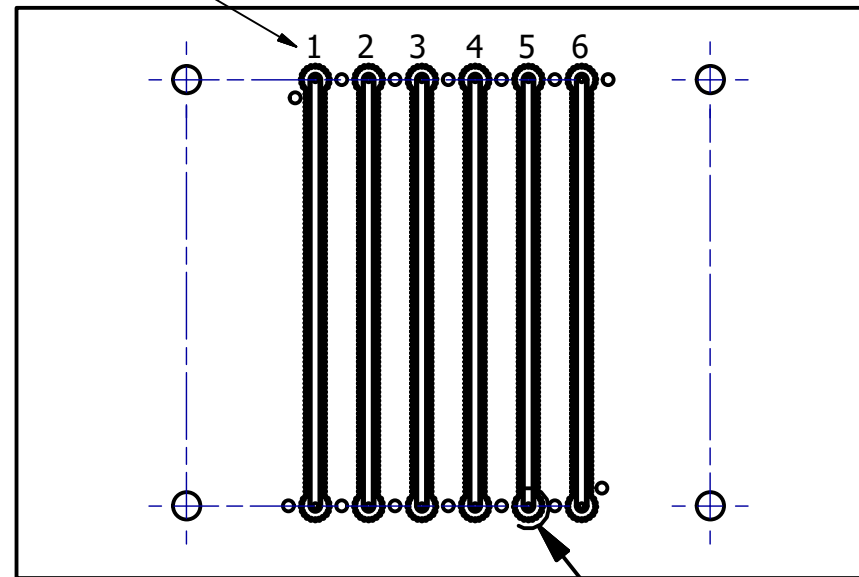
ALL DIMENSIONS ARE THE SAME
AS ON LAYER 2 - TOP FOIL



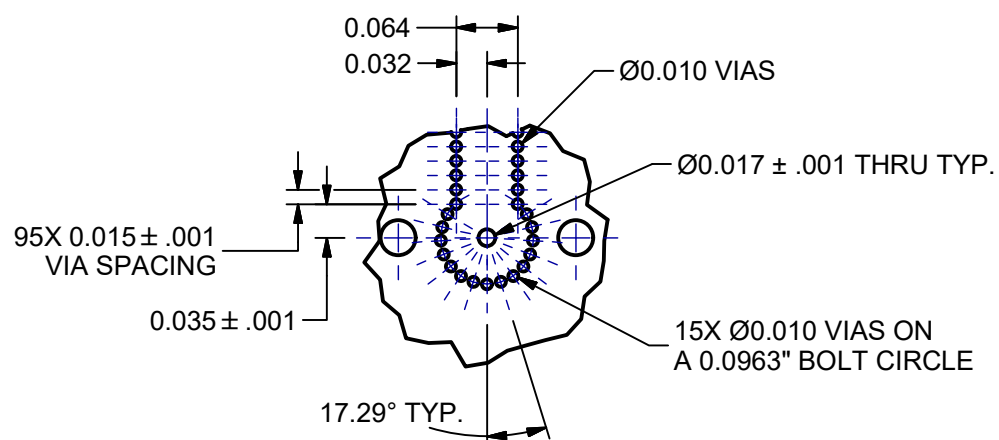
A
3rd LAYER
DIELECTRIC LAYER
0.032" THICK ROGERS 4003C

NUMBERS ARE FOR
IDENTIFICATION
PURPOSES ONLY

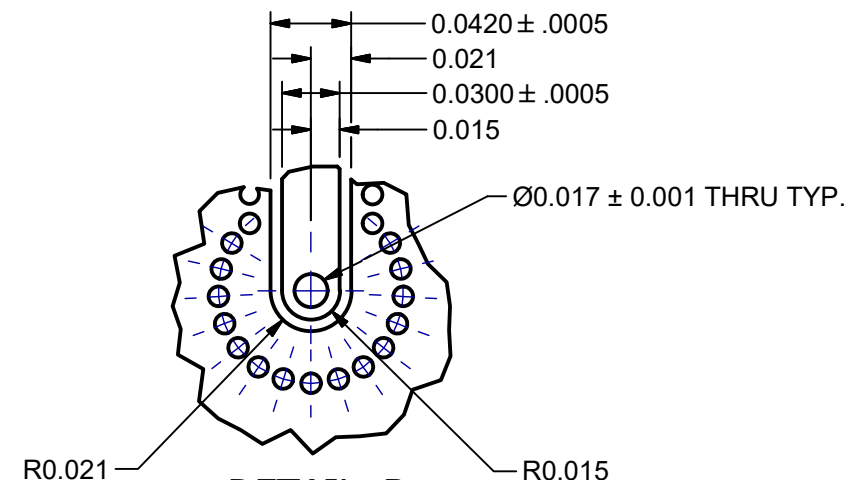
ALL DIMENSIONS ARE THE SAME
AS ON LAYER 2 - TOP FOIL
& LAYER 3 - DIELECTRIC LAYER




B
BOTTOM LAYER
BOTTOM FOIL
FINISHED COPPER
WEIGHT 1 oz.



DETAIL A
TYP. 6 PLACES
SCALE 5 : 1

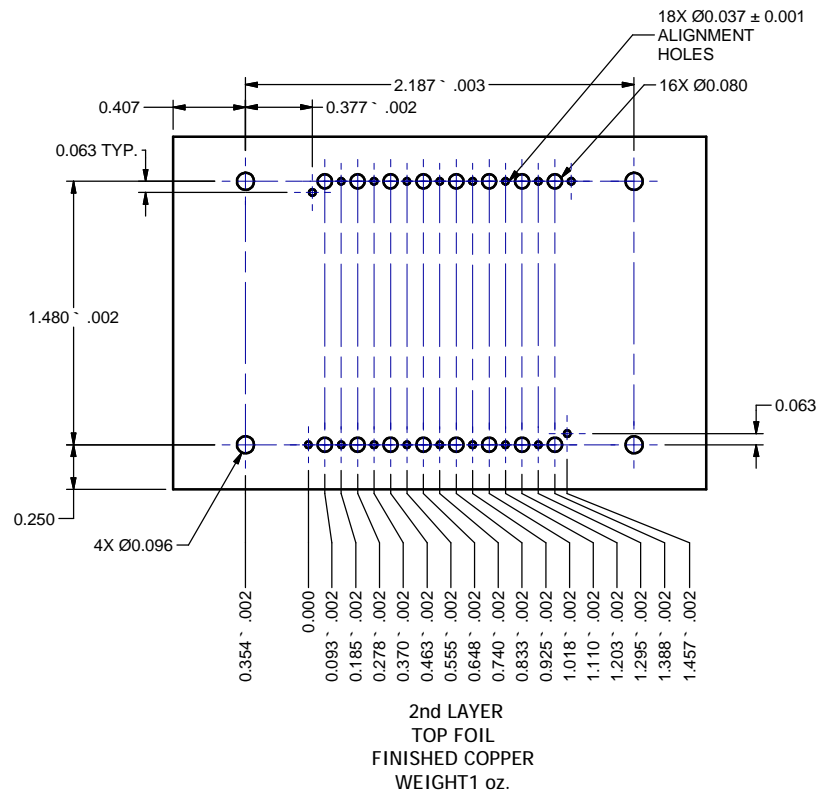
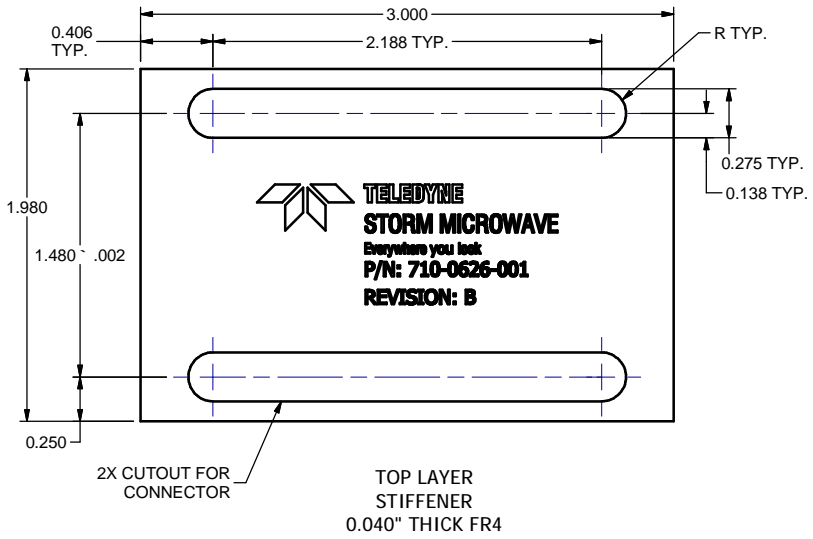
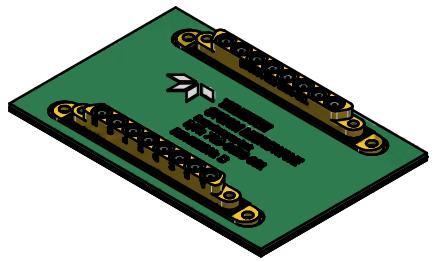


DETAIL B
TYP. 6 PLACES
SCALE 10 : 1

UNLESS OTHERWISE SPECIFIED: DIM .XX ± .015" DIM .XXX ± .005" DIM .XXXX ± .0002" ANGLES ± 1° ALL DIMENSIONS ARE IN INCHES. REMOVE ALL BURRS, BREAK CORNERS & SHARP EDGES .003" MAX. PART OR ASS'Y WEIGHT: N/A	ENGINEER: T.McNAMARA	PROJECT No: 4792	 TELEDYNE STORM MICROWAVE <i>Everywhere you look</i>	10221 WERCH DRIVE Woodridge, IL 60517 www.teledynestorm.com	
	QUALITY: Quality Signature				
	MATERIAL:		TITLE: 6 POSITION VERTICAL LAUNCH PC BOARD		
	FINISH:		DRAWING SIZE: B	SCALE: 1.5:1	SHEET 2 of 2
		DRAWING NUMBER: 710-0717	REVISION LEVEL: A		

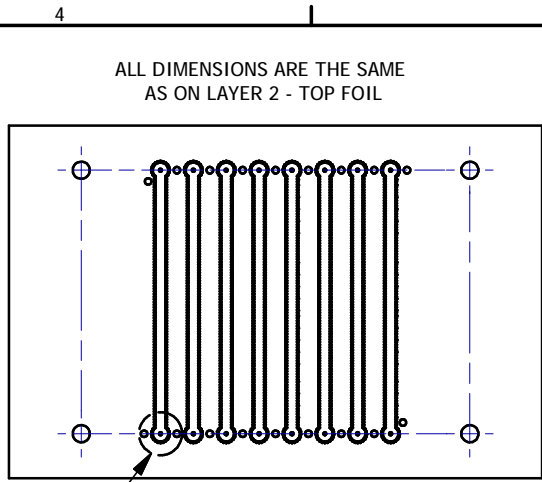
TELEDYNE
PART NUMBER
710-0626-001

REVISION HISTORY					
REV	DATE	ORIGINATOR	APPROVED	DCRN	CAD
A	06/15/2017	Project 4792	J. Armbruster	1706081	TMM
B	12/7/2017	N. Welinski	R. Nichols	1712031	NRW



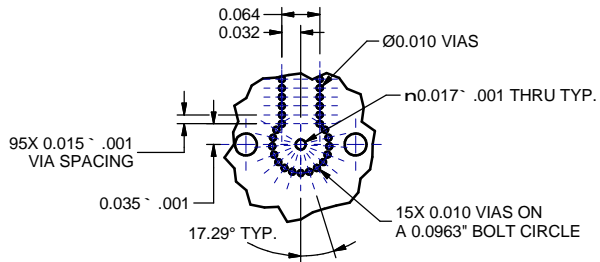
- NOTES TO MANUFACTURER**
- VIAS ARE THE ONLY PLATED THRU HOLES. ALL OTHER HOLES SHOULD NOT BE PLATED.
 - THE FR4 SUBSTRATE SHOULD BE BONDED WITH NO FLOW PRE-PREG.

UNLESS OTHERWISE SPECIFIED: DIM .XX ± .015" DIM .XXX ± .005" DIM .XXXX ± .002" ANGLES ± 1° ALL DIMENSIONS ARE IN INCHES. REMOVE ALL BURRS, BREAK CORNERS & SHARP EDGES .003" MAX.	ENGINEER: T.MCNAMARA	PROJECT No: 4792	<p>TELEDYNE STORM MICROWAVE Everywhere you look www.teledynestorm.com</p>	10221 WERCH DRIVE Woodridge, IL 60517
	QUALITY: Quality Signature	TITLE: VERTICAL LAUNCH PC BOARD		
PART OR ASSY WEIGHT: N/A	MATERIAL:	FINISH:	DRAWING SIZE: B SCALE: 1.5:1	SHEET 1 of 2
			DRAWING NUMBER: 710-0626	REVISION LEVEL: B



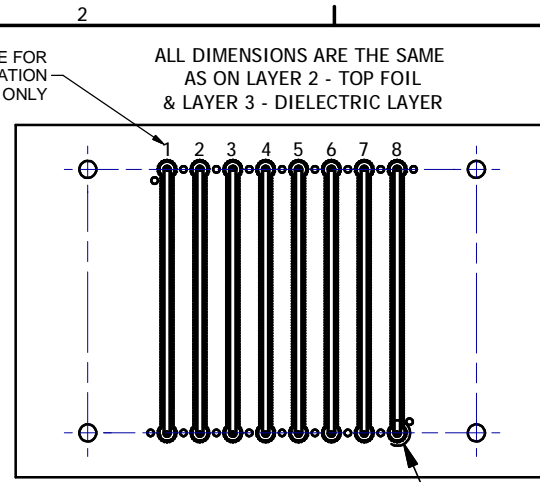
ALL DIMENSIONS ARE THE SAME
AS ON LAYER 2 - TOP FOIL

3rd LAYER
DIELECTRIC LAYER
0.032" THICK ROGERS 4003C



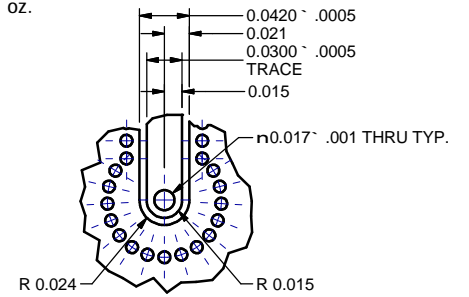
DETAIL A
TYP. 8 PLACES
SCALE 5 : 1

NUMBERS ARE FOR
IDENTIFICATION
PURPOSES ONLY



ALL DIMENSIONS ARE THE SAME
AS ON LAYER 2 - TOP FOIL
& LAYER 3 - DIELECTRIC LAYER

BOTTOM LAYER
BOTTOM FOIL
FINISHED COPPER
WEIGHT 1 oz.



DETAIL B
TYP. 8 PLACES
SCALE 10 : 1

UNLESS OTHERWISE SPECIFIED: DIM .XX ± .015" DIM .XXX ± .005" DIM .XXXX ± .0002" ANGLES ± 1°	ENGINEER: T.MCNAMEARA	PROJECT No: 4792	 TELEDYNE STORM MICROWAVE Everywhere you look 10221 WERCH DRIVE Woodridge, IL 60517 www.teledynestorm.com
	QUALITY: Quality Signature	TITLE: VERTICAL LAUNCH PC BOARD	
ALL DIMENSIONS ARE IN INCHES. REMOVE ALL BURRS, BREAK CORNERS & SHARP EDGES .003" MAX.	MATERIAL:	DRAWING SIZE: B SCALE: 1.5:1 SHEET 2 of 2	
PART OR ASSY WEIGHT: N/A	FINISH:	DRAWING NUMBER: 710-0626	REVISION LEVEL: B